

# Installation & Maintenance Instructions

## *Rotary Valve Position Indicator*

### Aluminum Based Construction

ROTARY VALVE  
POSITION INDICATOR

I&M No. V7488R7—Sec. 2  
(Section 2 of 2)

**Notice:** These instructions are divided in to two sections. Be sure to read, understand and follow all instructions on I&M No. V7488R7—Section 1 and 2.

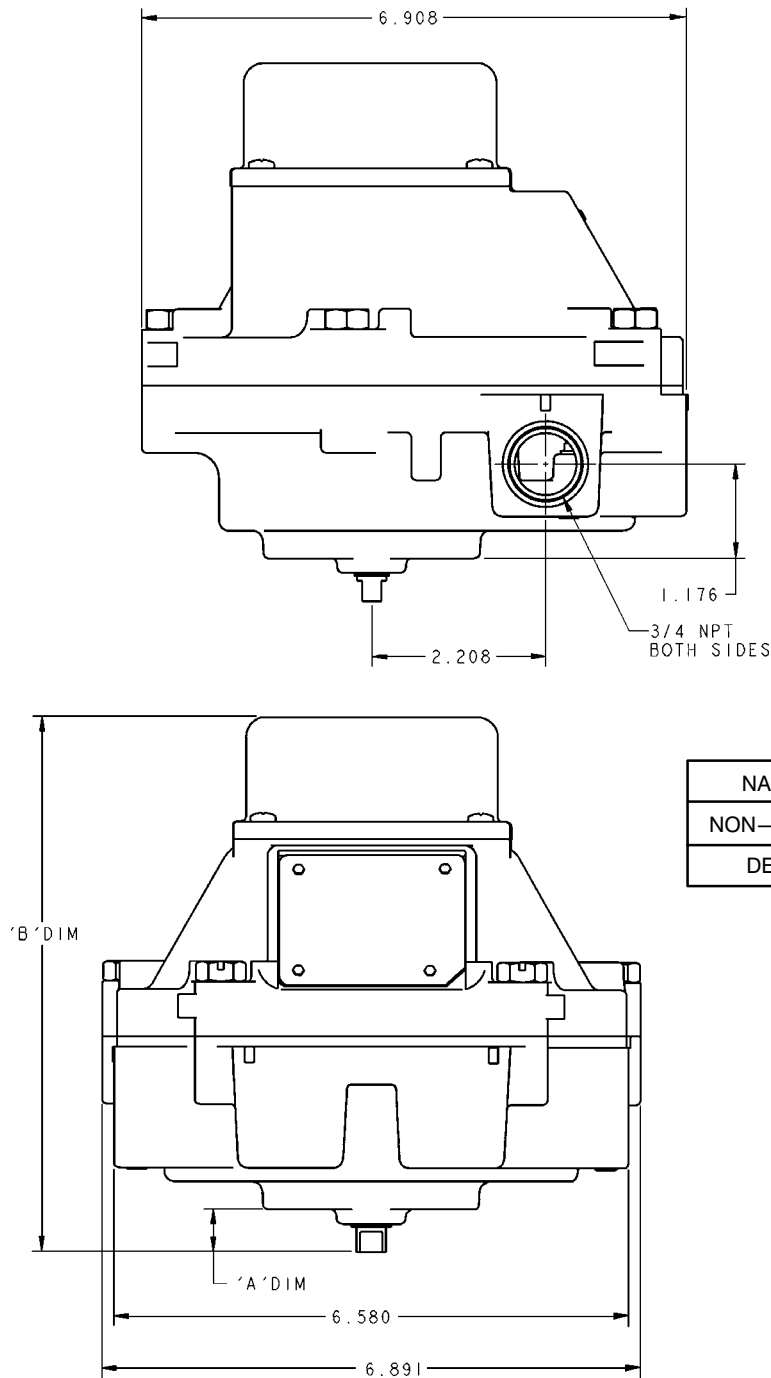


Figure 6. Dimensions

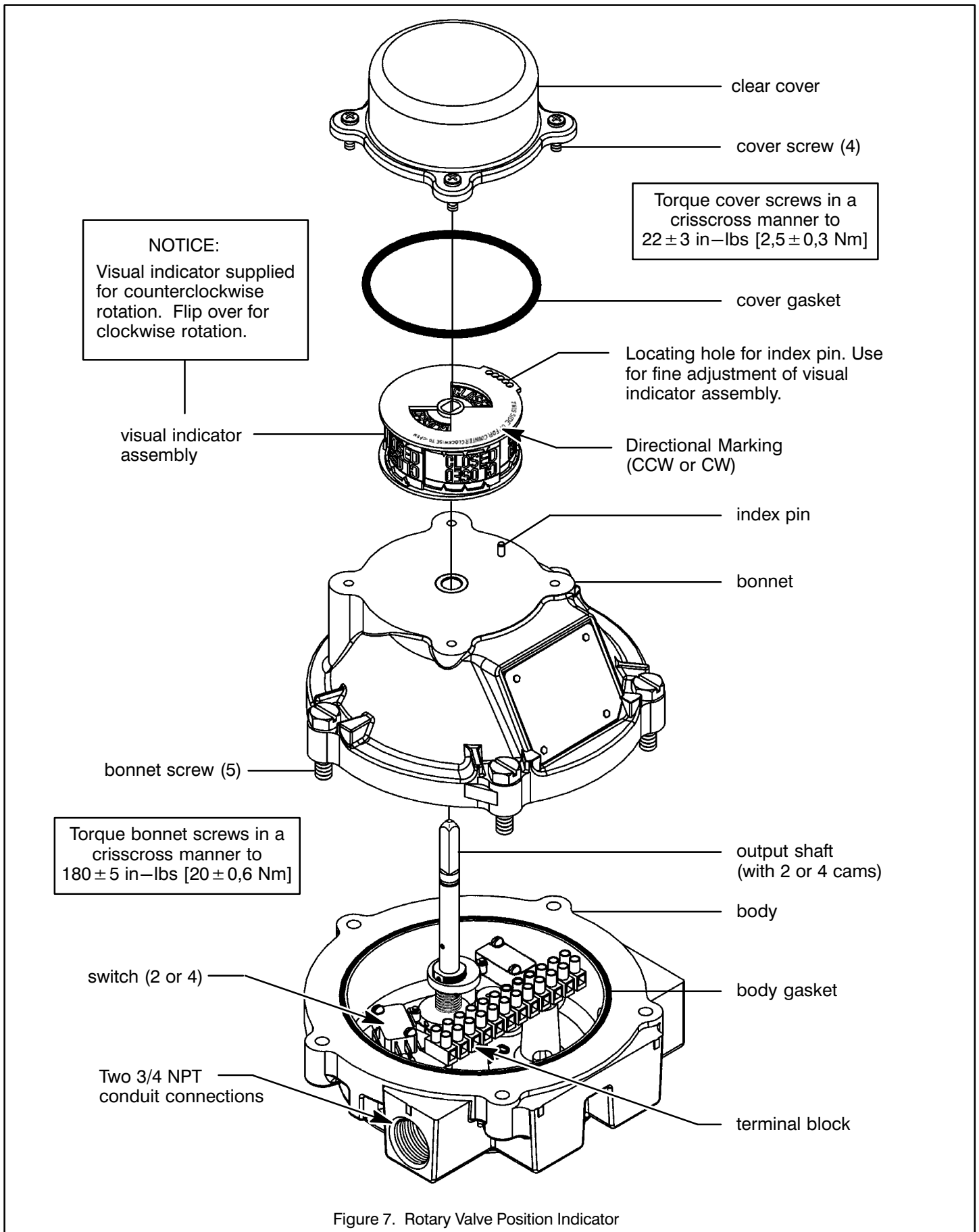


Figure 7. Rotary Valve Position Indicator