



AIR TORQUE

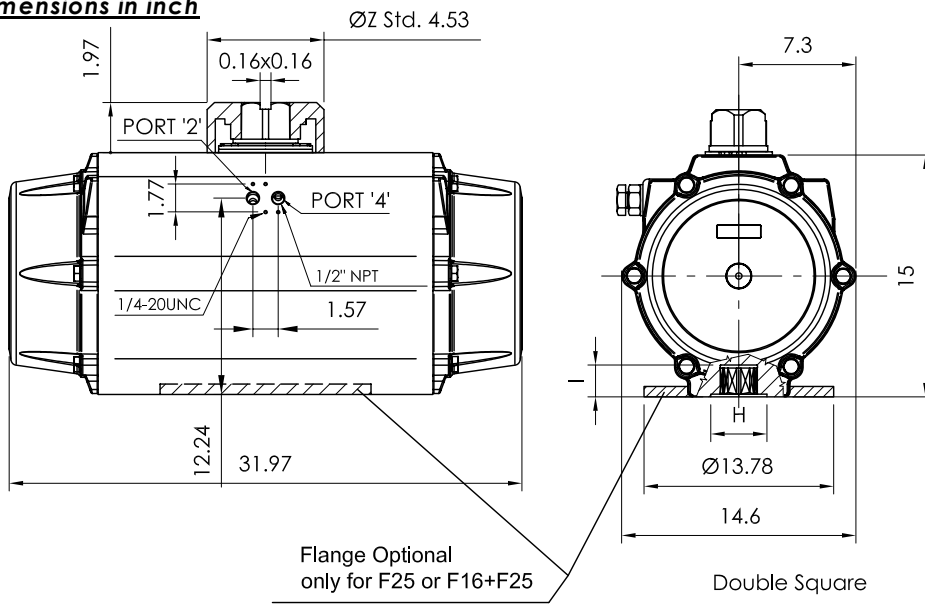
AIR TORQUE S.p.A.
 via Alla Campagna, N°1
 24060 Costa di Mezzate (Bg) Italy
 Tel.: +39 035 682299
 Fax: +39 035 687791
 E-mail: info@airtorque.it

Technical Data Sheet n° **PT750DU**
 Issued on: 08/08

Page: 1/1

Model: PT750
DA and SR - 90°

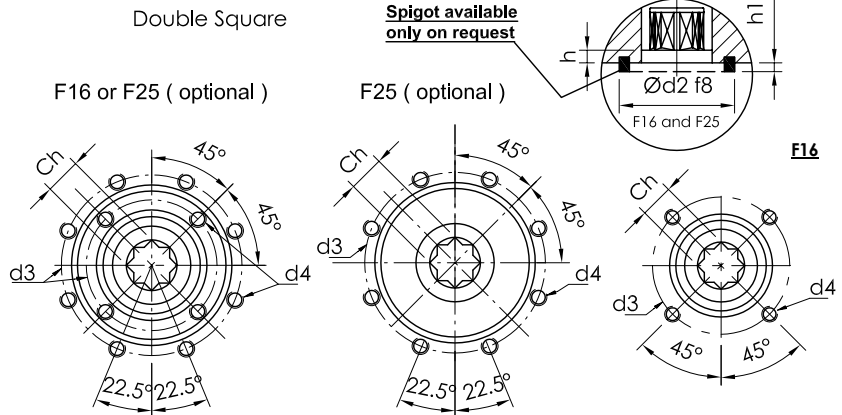
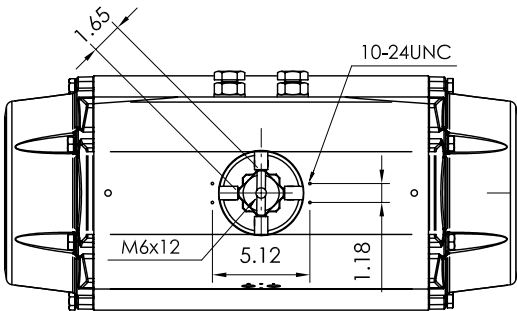
Dimensions in inch



Available flange:

- ⇒ **F16**
- ⇒ **F25 (optional)**
- ⇒ **F16 + F25 (optional)**

Flange Dimensions			
ISO 5211	F16	F25	F16 + F25
d2 f8	5,12	7,87	NA
d3	6,49	10	6,49 10
d4	3/4-10 UNCx1,18	5/8-11 UNCx0,94	3/4-10UNCx1,18 5/8-UNCx0,94
H	5,12	7,87	NA
Ch x l min.	1,81x1,89	2,16x2,24	1,81x1,89 or 2,16x2,24
h min.	0,098	0,098	0,098
h1	0,2	0,16	NA
Position Indicator or for proximity			Z = 4,53
Pressure connection			NP 4
Ancillary Attachment			AA 4



TYPE	OUTPUT TORQUE FOR DOUBLE ACTING IN LBS-IN								WEIGHT (LBS)									
	40 Psi		50 Psi		60 Psi		70 Psi		80 Psi		90 Psi		100 Psi		116 Psi		F16	F16 + F25 or F25 (Whit optional flange)
Pressure	0°	90°	0°	90°	0°	90°	0°	90°	0°	90°	0°	90°	0°	90°	0°	90°		
D	17528		21910		26292		30674		35056		39438		43820		50831		260	271

TYPE	OUTPUT TORQUE FOR SPRING RETURN IN LBS-IN										Spring		WEIGHT (LBS)							
	40 Psi		50 Psi		60 Psi		70 Psi		80 Psi		90 Psi		100 Psi		116 Psi		stroke		F16	F16 + F25 or F25 (Whit optional flange)
Pressure	0°	90°	0°	90°	0°	90°	0°	90°	0°	90°	0°	90°	0°	90°	0°	90°	90°	0°		
	Start	End	Start	End	Start	End	Start	End	Start	End	Start	End	Start	End	Start	End	Start	End		
S 05	11059	7868	15441	12250	19823	16632	24205	21014	28587	25395	32969	29777	37351	34159	44362	41170	9660	6469	289	300
S 06	9765	5936	14147	10318	18529	14700	22911	19081	27293	23463	31675	27845	36057	32227	43068	39238	11592	7763	295	306
S 07	8471	4004	12853	8386	17235	12767	21617	17149	25999	21531	30381	25913	34763	30295	41774	37306	13524	9056	301	312
S 08			11560	6454	15942	10835	20323	15217	24705	19599	29087	23981	33469	28363	40480	35374	15456	10350	306	317
S 09			10266	4521	14648	8903	19030	13285	23412	17667	27794	22049	32176	26431	39187	33442	17388	11644	312	322
S 10					13354	6971	17736	11353	22118	15735	26500	20117	30882	24499	37893	31510	19320	12938	318	329
S 11							16442	9421	20824	13803	25206	18185	29588	22567	36599	29578	21252	14231	324	335
S 12									19530	11871	23912	16253	28294	20635	35305	27646	23184	15525	330	341

Max. Pressure	Rotation	Screw stroke Adjustment	Chamber φ (Inch)	Air Volume (in ³)		Moving Time (Sec.) (A)		Operating Temperature (°F) (B)				
				Opening	Closing	Opening	Closing	STD (standard)	HT (high temperature)	LT (low temperature)		
116 Psi	90° ±4° at 0° and 90°	For 1° adj. need 1/4 Turn	11,81	1220	2014	D	5,0	D	6,0	NBR "O" ring	FPM "O" ring	Silicone "O" ring
						S	6,0	S	7,0	- 4 to + 176	+ 5 to + 300	- 40 to + 176

Notes:
 (A) The above indicated moving time of the actuator, are obtained in the following test conditions:
 (1) Room Temperature, (2) Actuator Stroke 90°, (3) Solenoid Valve with Orifice Of 11 mm and a flow capacity Qn 6000 L/min., (4) Inside pipe diameter 11 mm, (5) Medium clean air, (6) Air supply pressure 5,5 bar (79,75 Psi), (7) Actuator without external resistance load. **Cautions: obviously on the field applications when one or more of the above parameter are different, the moving time will be different.**
 (B) For HT (high temperature) and LT (low temperature) services, a special Lubricant is requested. Please contact Air Torque factory.

Operating Medium:
 The operating medium must be free of dust and oil. The maximum particle size must not exceed 30µm (ISO 8573 Part1, Class5). In order to prevent water condensation and/or solidification (ice, when actuator work below 0°C), the operating medium must have a dew point equal to -20°C or, at least 10°C below the ambient temperature (ISO 8573 Part1, Class3).