



AIR TORQUE

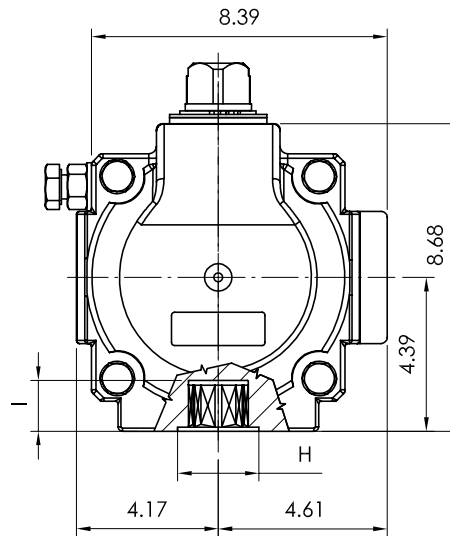
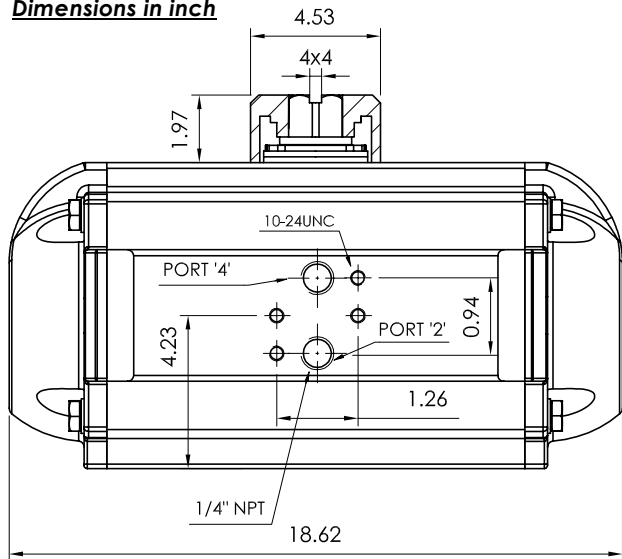
AIR TORQUE S.p.A.
 via Alla Campagna, N°1
 24060 Costa di Mezzate (Bg) Italy
 Tel.: +39 035 682299
 Fax: +39 035 687791
 E-mail: info@airtorque.it

Technical Data Sheet n° **PT550DU**
 Issued on: 12/04

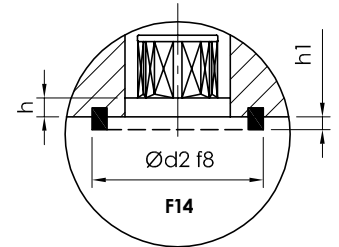
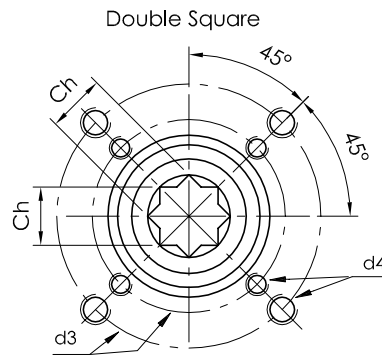
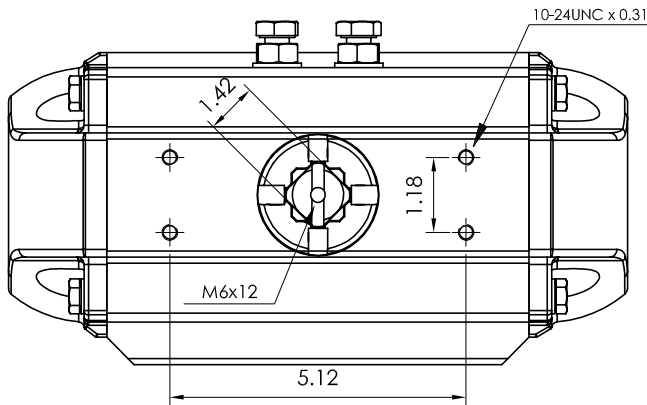
Page: 1/1

Model PT550
DA and SR - 90°

Dimensions in inch



Flange Dimensions	
ISO 5211	F14
d2 f8	3.94
d3	5.51
d4	5/8-11UNC x 0.94
H	3.94
Ch	1.42
l min.	1.5
h min.	0.08
h1	0.12
Pressure connection	N 2
Ancillary Attachment	AA 4



Spigot available only on request

TYPE	OUTPUT TORQUE FOR DOUBLE ACTING IN FT-LBS								WEIGHT (LBS)								
	40 Psi		50 Psi		60 Psi		70 Psi			80 Psi		90 Psi		100 Psi		116 Psi	
Pressure	0°	90°	0°	90°	0°	90°	0°	90°	0°	90°	0°	90°	0°	90°	0°	90°	55,0
D	312		390		467		545		623		701		779		904		

TYPE	OUTPUT TORQUE FOR SPRING RETURN IN FT-LBS										Spring stroke		WEIGHT (LBS)							
	40 Psi		50 Psi		60 Psi		70 Psi		80 Psi		90 Psi			100 Psi		116 Psi		90°	0°	
Pressure	0°	90°	0°	90°	0°	90°	0°	90°	0°	90°	0°	90°	0°	90°	0°	90°	0°	90°	Start	End
S 05	195	137	273	215	351	293	429	371	507	449	585	527	662	604	787	729	175	116,6	62,6	
S 06	172	102	250	180	328	258	405	336	483	414	561	492	639	570	764	694	210	139,9	64,1	
S 07	148	67,1	226	145	304	223	382	301	460	379	538	457	616	535	740	659	245	163	65,6	
S 08			203	110	281	188	359	266	437	344	515	422	593	500	717	624	279	187	67,2	
S 09			180	75	258	153,1	335	231	413	309	491	387	569	465	694	589	314	210	68,7	
S 10					234	118	312	196	390	274	468	352	546	430	671	554	349	233	70,2	
S 11							452	406	530	484	608	561	686	639	810	764	384	257	71,7	
S 12									343	204	421	282	499	360	624	485	419	280	73,2	

Max. Pressure	Rotation	Screw stroke Adjustment	Chamber φ (inch)	Air Volume (in ³)		Moving Time (Sec.) (A)		Operating Temperature (°F) (B)		
				Opening	Closing	Opening	Closing	STD (standard)	HT (high temperature)	LT (low temperature)
116 Psi	90° ±4° at 0° and 90°	For 1° adj. need 1/4 Turn	7,09	260	420	D 2,0 S 2,4	D 2,2 S 2,8	NBR "O" ring - 4 to + 176	FPM "O" ring + 5 to + 300	Silicone "O" ring - 40 to + 176

Notes:
(A) The above indicated moving time of the actuator, are obtained in the following test conditions:
 (1) Room Temperature, (2) Actuator Stroke 90°, (3) Solenoid Valve with Orifice Of 11 mm and a flow capacity Qn 6000 L/min., (4) Inside pipe diameter 11 mm, (5) Medium clean air, (6) Air supply pressure 5,5 bar (79,75 Psi), (7) Actuator without external resistance load. **Cautions: obviously on the field applications when one or more of the above parameter are different, the moving time will be different.**
(B) For HT (high temperature) and LT (low temperature) services, a special Lubricant is requested. Please contact Air Torque factory.

Operating Medium:
 The operating medium must be free of dust and oil. The maximum particle size must not exceed 30µm (ISO 8573 Part1, Class5). In order to prevent water condensation and/or solidification – ice, when actuator work below 0°C (32°F) –, the operating medium must have a dew point equal to -20°C (-4°F) or, at least 10°C below the ambient temperature (ISO 8573 Part1, Class3).