



# AIR TORQUE

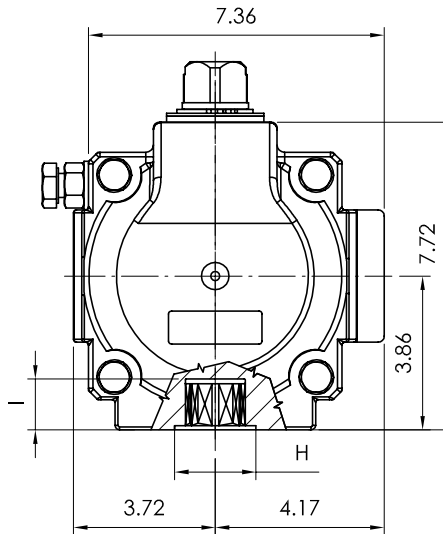
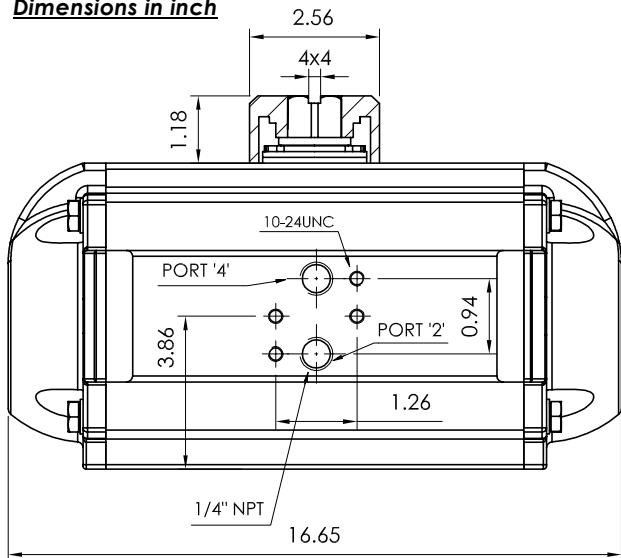
**AIR TORQUE S.p.A.**  
 via Alla Campagna, N°1  
 24060 Costa di Mezzate(Bg) Italy  
 Tel.: +39 035 682299  
 Fax: +39 035 687791  
 E-mail: info@airtorque.it

Technical Data Sheet n° **PT500DU**  
 Issued on: 12/04

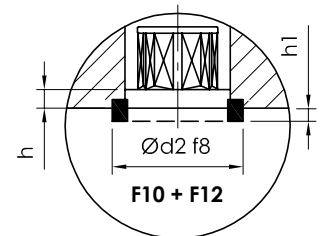
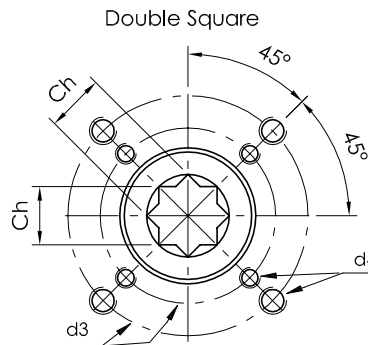
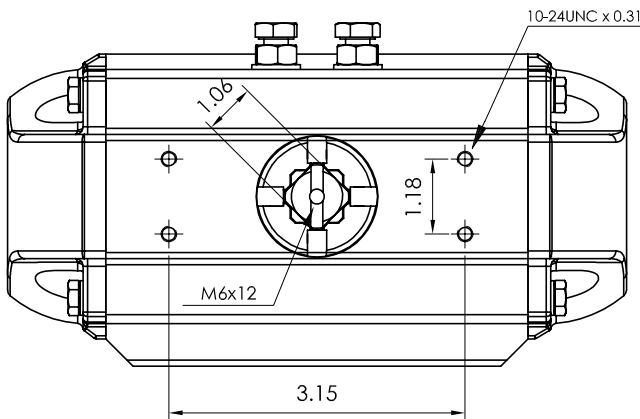
Page: 1/1

**Model PT500**  
**DA and SR - 90°**

**Dimensions in inch**



Flange Dimensions	
ISO 5211	F10 + F12
d2 f8	2,75
d3	4,02 + 4,92
d4	3/8-16UNC x 0,59 1/2-13UNC x 0,71
H	2,75
Ch	1,06
l min.	1,14
h min.	0,06
h1	0,12
Pressure connection	<b>N 2</b>
Ancillary Attachment	<b>AA 2</b>



**Spigot available only on request**

TYPE	OUTPUT TORQUE FOR DOUBLE ACTING IN FT-LBS								WEIGHT (LBS)								
	40 Psi		50 Psi		60 Psi		70 Psi				80 Psi		90 Psi		100 Psi		116 Psi
Pressure	0°	90°	0°	90°	0°	90°	0°	90°	0°	90°	0°	90°	0°	90°	0°	90°	43,2
D	231		289		346		404		462		519		577		669		

TYPE	OUTPUT TORQUE FOR SPRING RETURN IN FT-LBS												Spring stroke		WEIGHT (LBS)				
	40 Psi		50 Psi		60 Psi		70 Psi		80 Psi		90 Psi		100 Psi			116 Psi		90°	0°
Pressure	0°	90°	0°	90°	0°	90°	0°	90°	0°	90°	0°	90°	0°	90°	0°	90°	Start	End	
S 05	148	108	206	166	263	224	321	281	379	339	437	397	494	455	587	547	122	82,8	47,0
S 06	132	83,8	189	142	247	199	305	257	362	315	420	372	478	430	570	522	147	99,3	47,8
S 07	115	59,3	173	117	230	175	288	232	346	290	404	348	461	406	554	498	171	116	48,6
S 08			156	92,5	214	150	272	208	329	266	387	323	445	381	537	473	196	132	49,3
S 09			140	68	197	125,8	255	183	313	241	370	299	428	357	520	449	220	149	50,1
S 10					181	101	238	159	296	217	354	274	412	332	504	424	245	166	50,9
S 11							222	134	280	192	337	250	395	308	487	400	269	182	51,6
S 12									263	168	321	225	378	283	471	375	294	199	52,4

Max. Pressure	Rotation	Screw stroke Adjustment	Chamber ø (inch)	Air Volume (in <sup>3</sup> )		Moving Time (Sec.) (A)		Operating Temperature (°F) (B)		
				Opening	Closing	Opening	Closing	STD (standard)	HT (high temperature)	LT (low temperature)
116 Psi	90° ±4° at 0° and 90°	For 1° adj. need 1/4 Turn	6,30	192	300	D 1,5 S 1,8	D 1,7 S 2,1	NBR "O" ring - 4 to + 176	FPM "O" ring + 5 to + 300	Silicone "O" ring - 40 to + 176

**Notes:**  
 (A) The above indicated moving time of the actuator, are obtained in the following test conditions:  
 (1) Room Temperature, (2) Actuator Stroke 90°, (3) Solenoid Valve with Orifice Of 4 mm and a flow capacity Qn 400 L/min., (4) Inside pipe diameter 8 mm, (5) Medium clean air, (6) Air supply pressure 5,5 bar (79,75 Psi), (7) Actuator without external resistance load. **Cautions: obviously on the field applications when one or more of the above parameter are different, the moving time will be different.**  
 (B) For HT (high temperature) and LT (low temperature) services, a special Lubricant is requested. Please contact Air Torque factory.

**Operating Medium:**  
 The operating medium must be free of dust and oil. The maximum particle size must not exceed 30µm (ISO 8573 Part1, Class5). In order to prevent water condensation and/or solidification – ice, when actuator work below 0°C (32°F) – the operating medium must have a dew point equal to -20°C (-4°F) or, at least 10°C below the ambient temperature (ISO 8573 Part1, Class3).