



AIR TORQUE

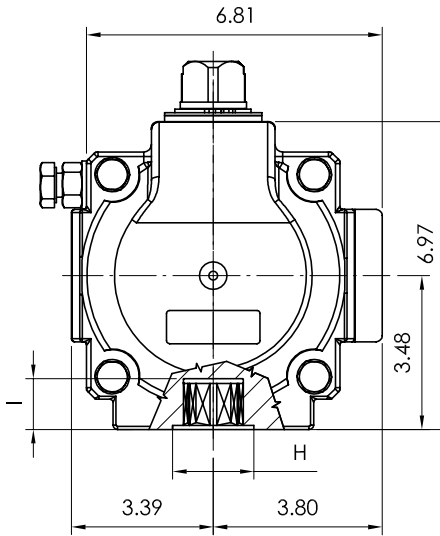
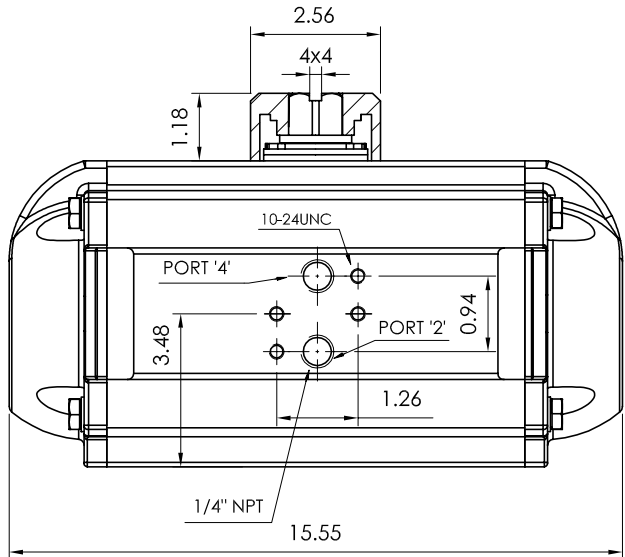
AIR TORQUE S.p.A.
 via Alla Campagna, N°1
 24060 Costa di Mezzate (Bg) Italy
 Tel.: +39 035 682299
 Fax: +39 035 687791
 E-mail: info@airtorque.it

Technical Data Sheet n°PT450DU
 Issued on: 12/04

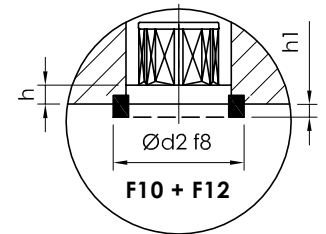
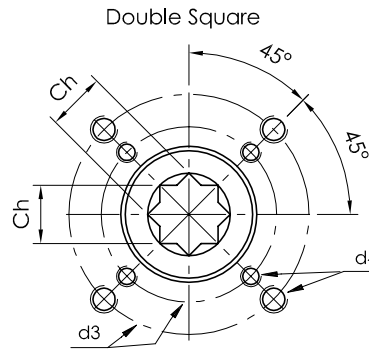
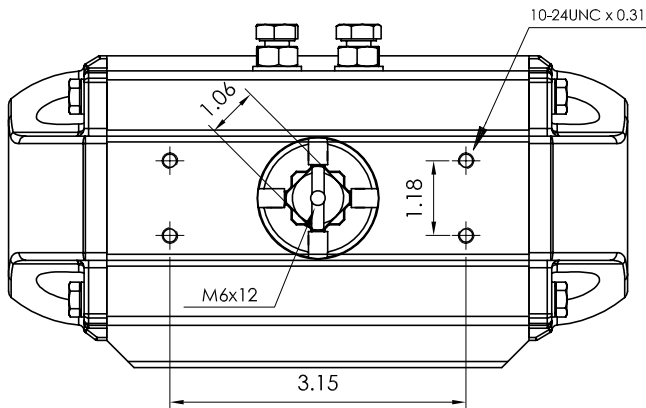
Page: 1/1

Model PT450
DA and SR - 90°

Dimensions in inch



Flange Dimensions	
ISO 5211	F10 + F12
d2 f8	2,75
d3	4,02 + 4,92
d4	3/8-16UNC x 0,59 1/2-13UNC x 0,71
H	2,75
Ch	1,06
l min.	1,14
h min.	0,06
h1	0,12
Pressure connection	N 2
Ancillary Attachment	AA 2



Spigot available only on request

TYPE	OUTPUT TORQUE FOR DOUBLE ACTING IN FT-LBS										WEIGHT (LBS)					
	40 Psi		50 Psi		60 Psi		70 Psi		80 Psi		90 Psi		100 Psi		116 Psi	
Pressure	0°	90°	0°	90°	0°	90°	0°	90°	0°	90°	0°	90°	0°	90°	0°	90°
D	177		221		265		310		354		398		442		513	

TYPE	OUTPUT TORQUE FOR SPRING RETURN IN FT-LBS										Spring stroke		WEIGHT (LBS)						
	40 Psi		50 Psi		60 Psi		70 Psi		80 Psi		90 Psi			100 Psi		116 Psi			
Pressure	0°	90°	0°	90°	0°	90°	0°	90°	0°	90°	0°	90°	0°	90°	0°	90°	90°	0°	
S 05	116	81,9	160	126	205	170	249	215	293	259	337	303	382	347	452	418	95	60,8	37,2
S 06	104	62,9	148	107	193	151	237	196	281	240	325	284	369	328	440	399	114	72,9	37,7
S 07	91,9	43,9	136	88,1	180	132	225	177	269	221	313	265	357	309	428	380	133	85,1	38,3
S 08			124	69,1	168	113	212	158	257	202	301	246	345	290	416	361	152	97,2	38,9
S 09			112	50,1	156	94,3	200	139	245	183	289	227	333	271	404	342	171	109	39,5
S 10					144	75,3	188	120	232	164	277	208	321	252	392	323	190	122	40,1
S 11							176	101	220	145	264	189	309	233	379	304	209	134	40,7
S 12									208	126	252	170	297	214	367	285	228	146	41,3

Max. Pressure	Rotation	Screw stroke Adjustment	Chamber φ (inch)	Air Volume (in³)		Moving Time (Sec.) (A)		Operating Temperature (°F) (B)		
				Opening	Closing	Opening	Closing	STD (standard)	HT (high temperature)	LT (low temperature)
116 Psi	90° ±4° at 0° and 90°	For 1° adj. need 1/5 Turn	5,71	147	231	D 1,2 S 1,5	D 1,4 S 1,8	NBR "O" ring - 4 to + 176	FPM "O" ring + 5 to + 300	Silicone "O" ring - 40 to + 176

Notes:

(A) The above indicated moving time of the actuator, are obtained in the following test conditions:

(1) Room Temperature, (2) Actuator Stroke 90°, (3) Solenoid Valve with Orifice Of 4 mm and a flow capacity Qn 400 L/min., (4) Inside pipe diameter 8 mm, (5) Medium clean air, (6) Air supply pressure 5,5 bar (79,75 Psi), (7) Actuator without external resistance load. **Caution: obviously on the field applications when one or more of the above parameter are different, the moving time will be different.**

(B) For HT (high temperature) and LT (low temperature) services, a special Lubricant is requested. Please contact Air Torque factory.

Operating Medium:

The operating medium must be free of dust and oil. The maximum particle size must not exceed 30µm (ISO 8573 Part1, Class5). In order to prevent water condensation and/or solidification – ice, when actuator work below 0°C (32°F) – the operating medium must have a dew point equal to -20°C (-4°F) or, at least 10°C below the ambient temperature (ISO 8573 Part1, Class3).