

AIR TORQUE

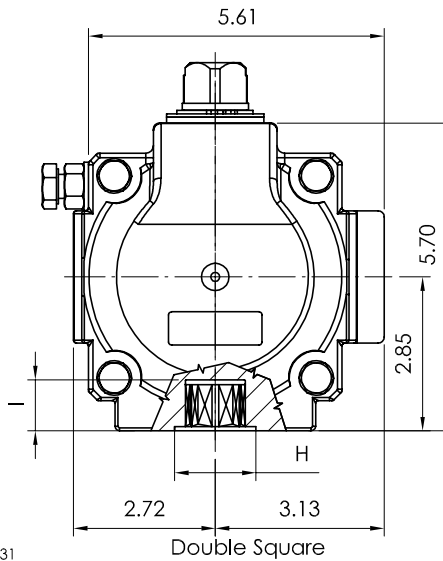
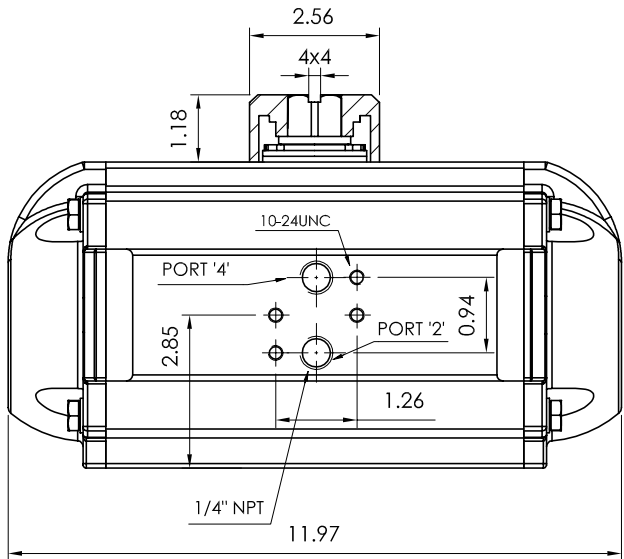
AIR TORQUE S.p.A.
 via Alla Campagna, N° 1
 24060 Costa di Mezzate(Bg) Italy
 Tel.: +39 035 682299
 Fax: +39 035 687791
 E-mail: info@airtorque.it

Technical Data Sheet n° **PT350DU**
 Issued on: 12/04

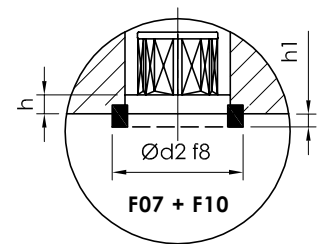
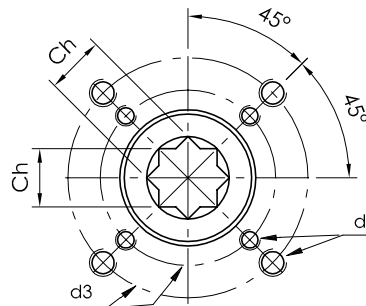
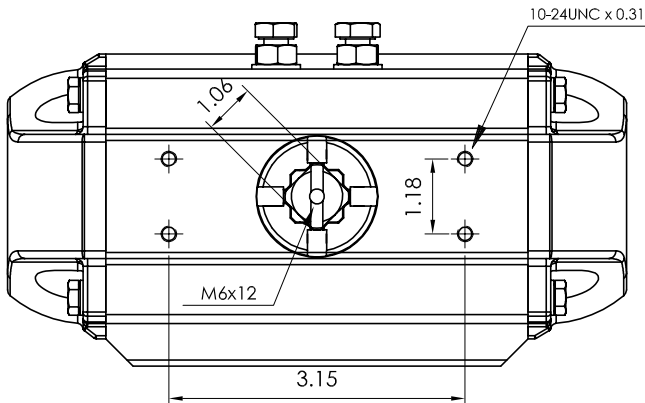
Page: 1/1

Model PT350
DA and SR - 90°

Dimensions in inch



Flange Dimensions	
ISO 5211	F07 + F10
d2 f8	2,17
d3	2,76 + 4,02
d4	5/16-18UNC x 0,47 3/8-16UNC x 0,59
H	2,17
Ch	0,87
l min.	0,94
h min.	0,06
h1	0,1
Pressure connection	N 2
Ancillary Attachment	AA 2



Spigot available only on request

TYPE	OUTPUT TORQUE FOR DOUBLE ACTING IN FT-LBS								WEIGHT (LBS)							
	40 Psi		50 Psi		60 Psi		70 Psi		80 Psi		90 Psi		100 Psi		116 Psi	
Pressure	0°	90°	0°	90°	0°	90°	0°	90°	0°	90°	0°	90°	0°	90°	0°	90°
D	87,5		109		131		153		175		197		219		254	

TYPE	OUTPUT TORQUE FOR SPRING RETURN IN FT-LBS																Spring stroke		WEIGHT (LBS)
	40 Psi		50 Psi		60 Psi		70 Psi		80 Psi		90 Psi		100 Psi		116 Psi		90°	0°	
Pressure	0°	90°	0°	90°	0°	90°	0°	90°	0°	90°	0°	90°	0°	90°	0°	90°	Start	End	
S 05	57,2	39,1	79,1	61	101	82,9	123	105	145	127	167	148	188	170	223	205	48,3	30,2	20,7
S 06	51,2	29,5	73	51,3	94,9	73,2	117	95,1	139	117	160	139	182	161	217	196	58	36,3	21,0
S 07	45,1	19,8	67	41,7	88,8	63,5	111	85,4	133	107	154	129	176	151	211	186	67,6	42,3	21,2
S 08			60,9	32	82,8	53,9	105	75,7	127	97,6	148	119	170	141	205	176	77,3	48,4	21,5
S 09			54,9	22,3	76,7	44,2	98,6	66,1	120	87,9	142	110	164	132	199	167	87	54,4	21,7
S 10					70,7	34,5	92,6	56,4	114	78,3	136	100	158	122	193	157	96,6	60,5	22,0
S 11							86,5	46,7	108	68,6	130	90,5	152	112	187	147	106	66,5	22,3
S 12									102	58,9	124	80,8	146	103	181	138	116	72,6	22,5

Max. Pressure	Rotation	Screw stroke Adjustment	Chamber φ (inch)	Air Volume (in ³)		Moving Time (Sec.) (A)		Operating Temperature (°F) (B)		
				Opening	Closing	Opening	Closing	STD (standard)	HT (high temperature)	LT (low temperature)
116 Psi	90° ±4° at 0° and 90°	For 1° adj. need 1/5 Turn	4,53	72,6	109,8	D 0,7 S 0,9	D 0,8 S 1,1	NBR "O" ring -4 to +176	FPM "O" ring +5 to +300	Silicone "O" ring -40 to +176

Notes:

(A) The above indicated moving time of the actuator, are obtained in the following test conditions:

(1) Room Temperature, (2) Actuator Stroke 90°, (3) Solenoid Valve with Orifice Of 4 mm and a flow capacity Qn 400 L/min., (4) Inside pipe diameter 8 mm, (5) Medium clean air, (6) Air supply pressure 5,5 bar (79,75 Psi), (7) Actuator without external resistance load. **Cautions: obviously on the field applications when one or more of the above parameter are different, the moving time will be different.**

(B) For HT (high temperature) and LT (low temperature) services, a special Lubricant is requested. Please contact Air Torque factory.

Operating Medium:

The operating medium must be free of dust and oil. The maximum particle size must not exceed 30µm (ISO 8573 Part1, Class5). In order to prevent water condensation and/or solidification – ice, when actuator work below 0°C (32°F) – the operating medium must have a dew point equal to -20°C (-4°F) or, at least 10°C below the ambient temperature (ISO 8573 Part1, Class3).