

# AIR TORQUE

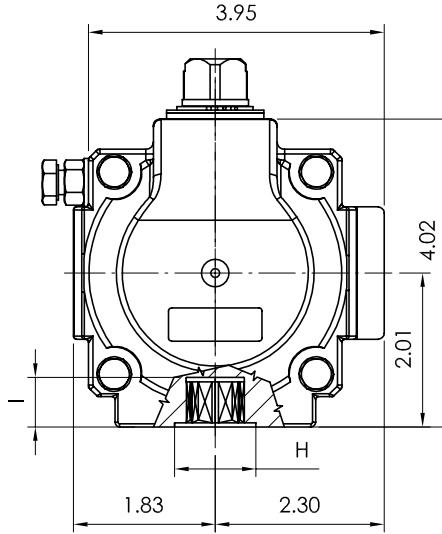
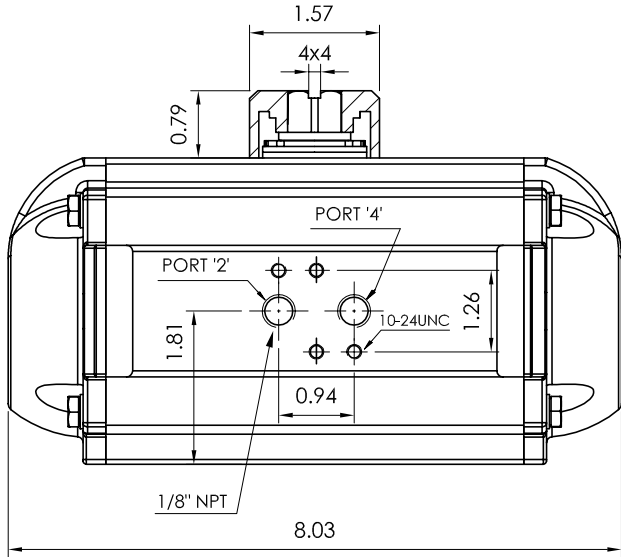
**AIR TORQUE S.p.A.**  
 via Alla Campagna, N°1  
 24060 Costa di Mezzate (Bg) Italy  
 Tel.: +39 035 682299  
 Fax: +39 035 687791  
 E-mail: info@airtorque.it

Technical Data Sheet n° **PT200DU**  
 Issued on: 12/04

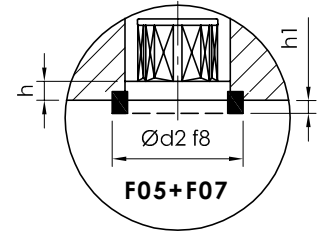
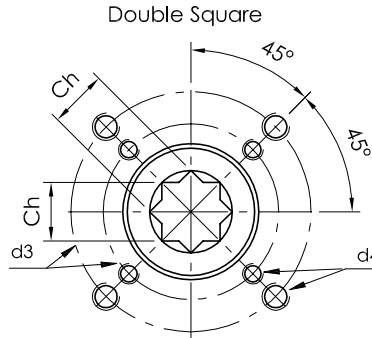
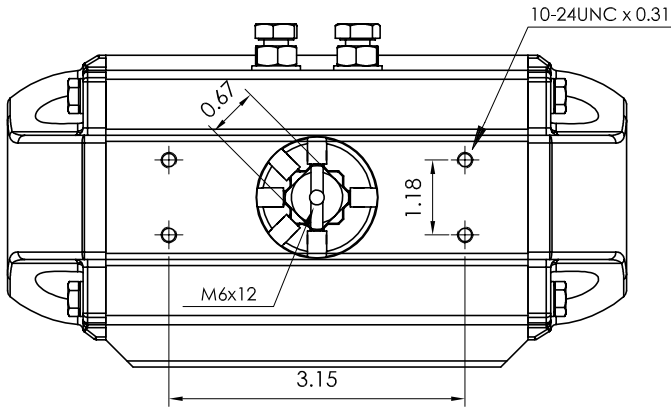
Page: 1/1

**Model PT200**  
**DA and SR - 90°**

**Dimensions in inch**



Flange Dimensions	
ISO 5211	F05 + F07
d2 f8	1,38 (Only F05)
d3	1,97 + 2,76
d4	1/4-20UNC x 0,35 5/16-18UNC x 0,47
H	1,38
Ch	0,55
l min.	0,63
h min.	0,06
h1	0,08
Pressure connection	N 1
Ancillary Attachment	AA 1



**Spigot available only on request**

TYPE	OUTPUT TORQUE FOR DOUBLE ACTING IN FT-LBS								WEIGHT (LBS)								
	40 Psi		50 Psi		60 Psi		70 Psi			80 Psi		90 Psi		100 Psi		116 Psi	
Pressure	0°	90°	0°	90°	0°	90°	0°	90°	0°	90°	0°	90°	0°	90°	0°	90°	6,53
D	23,7		29,6		35,5		41,4		47,3		53,3		59,2		68,6		

TYPE	OUTPUT TORQUE FOR SPRING RETURN IN FT-LBS																Spring stroke		WEIGHT (LBS)
	40 Psi		50 Psi		60 Psi		70 Psi		80 Psi		90 Psi		100 Psi		116 Psi		90°	0°	
Pressure	0°	90°	0°	90°	0°	90°	0°	90°	0°	90°	0°	90°	0°	90°	0°	90°	Start	End	
S 05	15,5	10,9	21,4	16,8	27,4	22,7	33,3	28,7	39,2	34,6	45,1	40,5	51,0	46,4	60,5	55,9	12,8	8,2	6,90
S 06	13,9	8,4	19,8	14,3	25,7	20,2	31,6	26,1	37,6	32	43,5	37,9	49,4	43,9	58,9	53,3	15,3	9,8	6,98
S 07	12,3	5,8	18,2	11,7	24,1	17,6	30	23,6	35,9	29,5	41,8	35,4	47,8	41,3	57,2	50,8	17,9	11,4	7,05
S 08			16,5	9,2	22,5	15,1	28,4	21	34,3	26,9	40,2	32,8	46,1	38,7	55,6	48,2	20,4	13	7,13
S 09			14,9	6,6	20,8	12,5	26,7	18,4	32,7	24,4	38,6	30,3	44,5	36,2	54	45,7	23	14,7	7,20
S 10					19,2	10	25,1	15,9	31	21,8	37	27,7	42,9	33,6	52,3	43,1	25,5	16,3	7,28
S 11							23,5	13,3	29,4	19,3	35,3	25,2	41,2	31,1	50,7	40,6	28,1	17,9	7,35
S 12									27,8	16,7	33,7	22,6	39,6	28,5	49,1	38	30,6	19,6	7,43

Max. Pressure	Rotation	Screw stroke Adjustment	Chamber φ (inch)	Air Volume (in <sup>3</sup> )		Moving Time (Sec.) (A)		Operating Temperature (°F) (B)		
				Opening	Closing	Opening	Closing	STD (standard)	HT (high temperature)	LT (low temperature)
116 Psi	90° ±4° at 0° and 90°	For 1° adj. need 1/6 Turn	2,95	18,9	29,9	D 0,30 S 0,40	D 0,35 S 0,50	NBR "O" ring - 4 to + 176	FPM "O" ring + 5 to + 300	Silicone "O" ring - 40 to + 176

- Notes:**
- (A) The above indicated moving time of the actuator, are obtained in the following test conditions:  
 (1) Room Temperature, (2) Actuator Stroke 90°, (3) Solenoid Valve with Orifice Of 4 mm and a flow capacity Qn 400 L/min., (4) Inside pipe diameter 8 mm, (5) Medium clean air, (6) Air supply pressure 5,5 bar (79,75 Psi), (7) Actuator without external resistance load. **Caution: obviously on the field applications when one or more of the above parameter are different, the moving time will be different.**
- (B) For HT (high temperature) and LT (low temperature) services, a special Lubricant is requested. Please contact Air Torque factory.

**Operating Medium:**  
 The operating medium must be free of dust and oil. The maximum particle size must not exceed 30µm (ISO 8573 Part1, Class5). In order to prevent water condensation and/or solidification – ice, when actuator work below 0°C (32°F) – the operating medium must have a dew point equal to -20°C (-4°F) or, at least 10°C below the ambient temperature (ISO 8573 Part1, Class3).